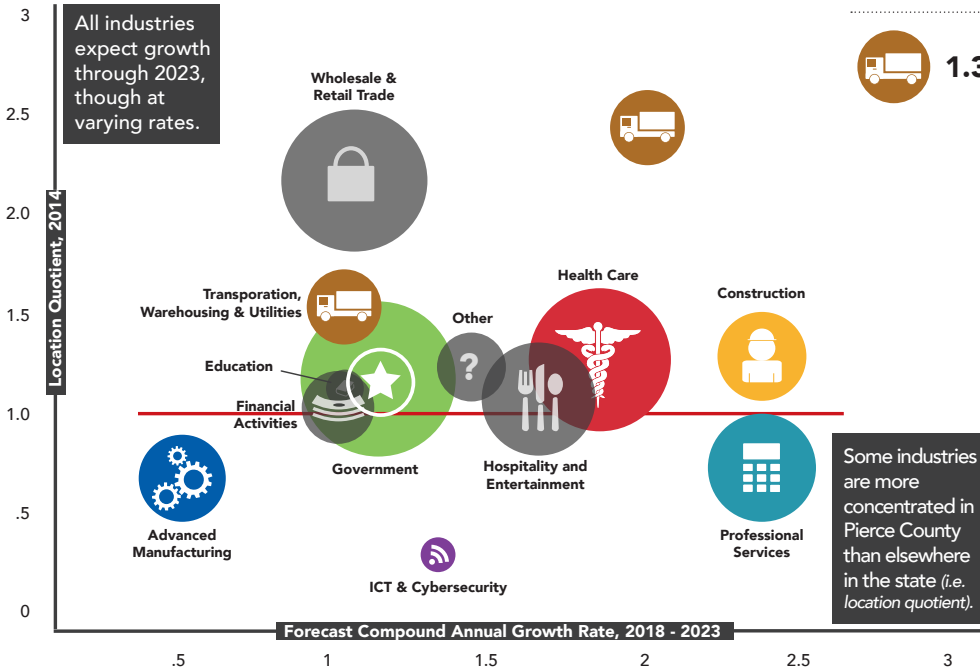
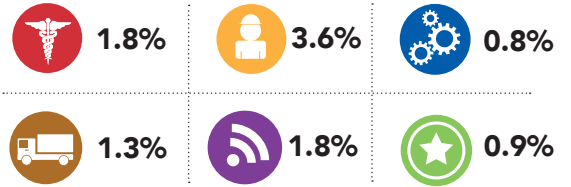


Employment



Pierce County Location Quotients and Industry Forecasted Compound Annual Growth Rates, 2014 and 2018-2023³

Projected Employment Growth 2018-2023



Employment by industry in the county is expected to remain stable between 2013-2023.

9.4 percent of workers in Pierce County totaling 289,000 are nonfarm workers.

2.4 percent decrease is projected in the government sector by 2023.

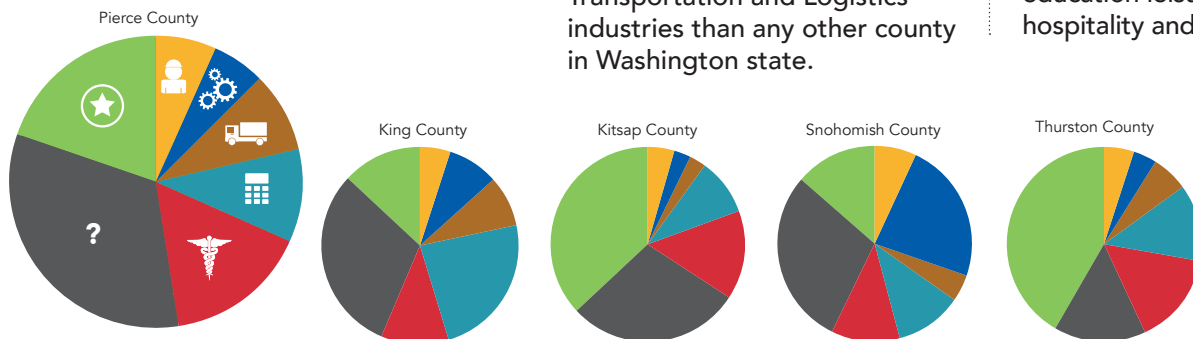
Additionally, this chart compares the relative size of each key industry in Pierce County by number of jobs.



Employment by Industry Statewide⁴

Pierce County is home to a larger share of the Construction, Trade, Transportation and Logistics industries than any other county in Washington state.

Other sectors include financial activities, information, education leisure and hospitality and other services.



This data includes all actual filled jobs, including both full and part time jobs.