

WorkSource One-stop Center 2121 State St. 3rd Floor Alder Room

April Gibson, Chair
Steve Gear, 1st Vice-chair
TBD, 2nd Vice-chair
Joyce Conner
April Gibson
Darci Gibson
Bruce Kendall
Dale King
Mandy Kipfer
Nathe Lawver
Mark Martinez
Tim McGann
Dona Ponepinto
Patty Rose
David Shaw
Dereck Spivey
Ron Thalheimer
Blaine Wolfe
Lin Zhou

WorkForce Central Staff
Linda Nguyen, CEO
lnguyen@workforce-central.org

Deborah, Howell, Vice President of
Innovation & Strategy
dhowell@workforce-central.org

Jan Adams, Executive Assistant
jadams@workforce-central.org

WorkForce Central
3640 S. Cedar St. Suite E
Tacoma, WA 98409
www.workforce-central.org

- 1. Welcome/Call to order/Safety Briefing**
- 2. Introductions**
- 3. Public Comment**
- 4. WorkForce Central Executive Board update – April Gibson**
- 5. Consent Agenda**
 - Approve September 19, 2018 minutes
- 6. Medical Assistant Apprenticeship Presentation – Darci Gibson**
- 7. CEO Report**
 - Bold Goals Quarter 1 Dashboard
 - Annual Audit by WA State Auditor's Office
 - Career Connected Regional Network Partnership
 - Workforce Development System Customer Satisfaction Report
- 8. WDC Committee Report Out**
- 9. Other business**
- 10. Closed Session**
 - CEO Search
- 11. Adjourn**

April Gibson, Chair
Steve Gear, 1st Vice-chair
TBD, 2nd Vice-chair
Joyce Conner
April Gibson
Darci Gibson
Bruce Kendall
Dale King
Mandy Kipfer
Nathe Lawver
Mark Martinez
Tim McGann
Dona Ponepinto
Patty Rose
David Shaw
Dereck Spivey
Ron Thalheimer
Blaine Wolfe
Lin Zhou

WorkForce Central Staff
Linda Nguyen, CEO
lnguyen@workforce-central.org

Deborah, Howell, Vice President of
Innovation & Strategy
dhowell@workforce-central.org

Jan Adams, Executive Assistant
jadams@workforce-central.org

WorkForce Central
3640 S. Cedar St. Suite E
Tacoma, WA 98409
www.workforce-central.org

Attendees: Blaine Wolfe, Steve Gear, Dale King, April Gibson, Nathe Lawver, Dona Ponepinto, Tim McGann, Patty Rose, Mandy Kipfer, Dave Shaw

Phone: Joyce Moyer

Staff: Linda Nguyen, Deborah Howell, Jan Adams, Josh Stovall

Guests: Janaea Starks, Rebecca O'Hara, Valerie Martinez

1. Welcome/Call to order/Safety Briefing

April called the meeting to order at 3:03 p.m. The safety briefing was given by Luke Upton.

2. Introductions

Introductions were done for the benefit of our guests.

3. Public Comment

None

4. WorkForce Central Executive Board update – April Gibson

April gave an update on yesterday's board meeting noting the discussion on the CEO replacement process, Tamar Jackson's award, the Common referral system presentation

5. Consent Agenda

• **Approve August 15, 2019 minutes**

Motion to approve made by Dale; seconded by Nathe. Approved

6. United Way of Pierce County Strategic Efforts to Lift Families Out of Poverty and Intersection with Workforce Development System – Dona Ponepinto

Linda introduced Dona who presented United Way's poverty strategy and progress including ALICE. Dona introduced Janae who is the 211 Navigator who presented the 211 system and a success story about Karen who started with 211 and was referred to several agencies worked with her was able to obtain employment as well as other assistance for some immediate needs. Dona also spoke about the United Way 100 year anniversary next year.

7. WDC Committee Report Out

• **Business Solutions – Steve Gear**

Steve noted the first meeting is scheduled for October 10th.

• **Talent Pipeline – Nathe Lawver**

Nathe noted they met this morning looking at the six sectors and have scheduled meetings for the rest of the year

• **Quality Assurance and Certification – Dave Shaw**

Dave noted the presentation to Pierce County Library with 18 connection sites who has representation throughout Pierce County. He thanked Dona for joining the team.

8. CEO Report

- **Unemployment Insurance Initiative progress/outcome**

Linda gave a background on the initiative, noting we are no longer able to get the list. With the people we have connected with 347 gained employment, 109 were co-enrolled in WIOA, 667 connected to WorkSource services and 604 referrals to 211 services. Discussion continued around how to get data to serve the customers.

- **Common Referral System Data Analysis – Josh Stovall**

Linda gave a background and introduced Josh who presented the data and trends from the Common Referral System

- **Director of Community Engagement Tamar Jackson Selected for the Trailblazer Award by Tacoma Urban League**

Linda spoke about Tamar being recognized as a trailblazer by the Tacoma Urban League on October 4th Jan will send the information to everyone.

- **Federal Year 2020 Budget – CR or Shut Down or Minibus?**

Dale noted the House passed a CR today.

- **Joint December meeting with Executive Board?**

Linda asked the group if they would like to have a joint meeting with the Executive Board on December 19th .

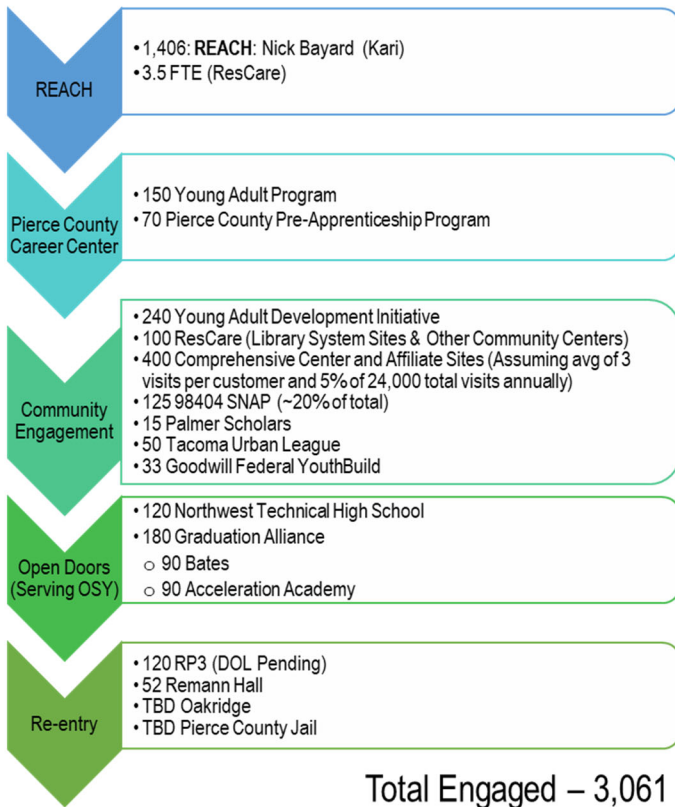
9. Other business

April gave an update on the CEO search. Motion to go into close session made by Dave; seconded by Nathe. Closed session began at 3:54 p.m. Returned from closed session at 4:25 pm.

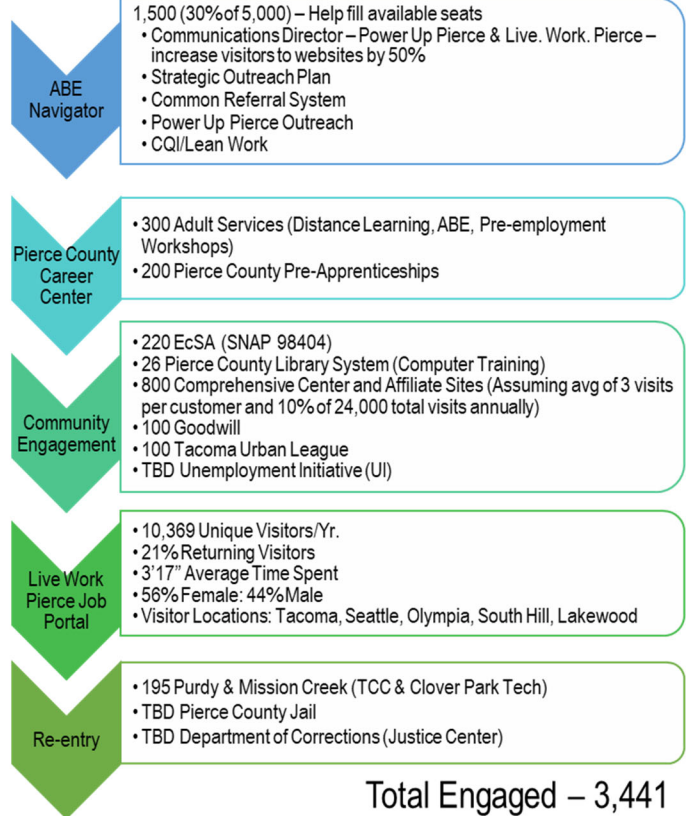
10. Adjourn

Motion to adjourn made by Dale; seconded by Nathe. Meeting adjourned at 4:26 p.m.

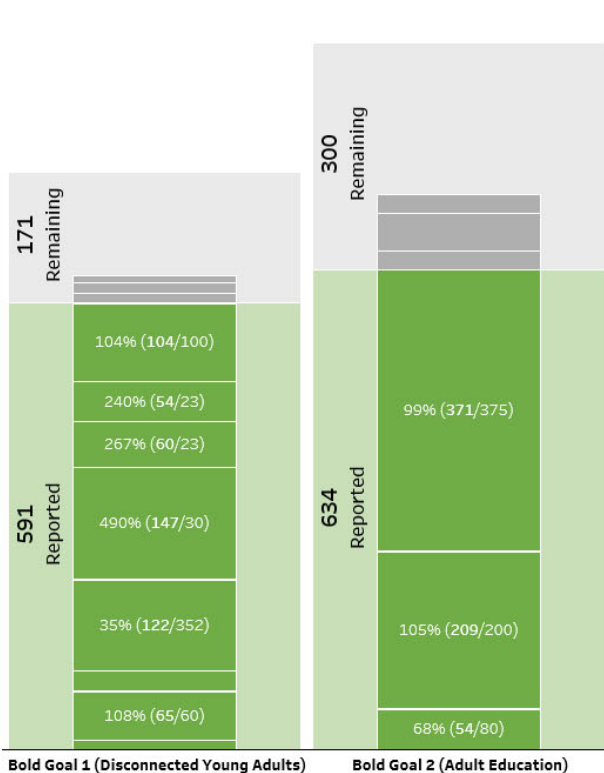
Disconnected young adults PY19/FY20 Annual Target 1,275



No High School Diploma or Equivalent PY19/FY20 Annual Target 3,206



Bold Goal System Dashboard (PY19 FY20, Quarter 1)



18 of 24 Measures Reported

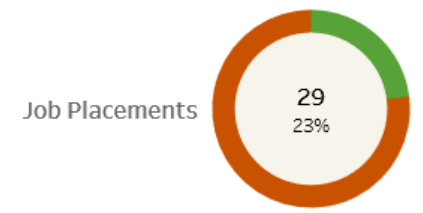
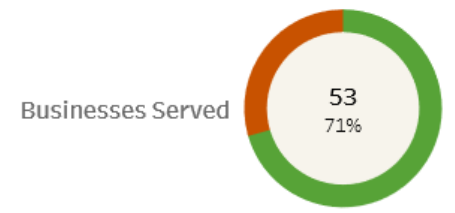
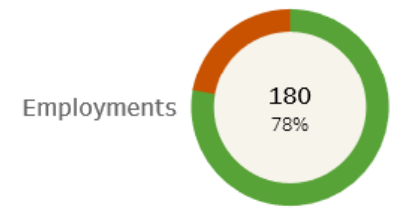
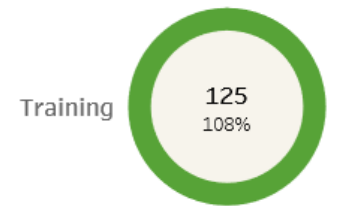
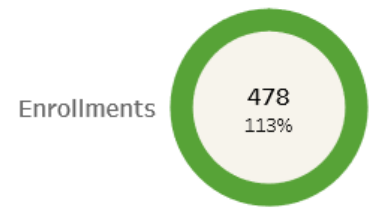
Bold Goal:

Projected:

| Segment | Reporting Partner | Bold Goal 1 (Disconnected Young Adults) | Bold Goal 2 (Adult Education) |
|-----------------------------|---|---|-------------------------------|
| REACH | REACH | █ | |
| ABE Navigator | (30% of 5,000) – Help fill available seats | | █ |
| Pierce County Career Center | Young Adult Program Adult Services (Distance Learning, ABE, Pre-employment Worksh.. Pierce County Pre-Apprenticeship Program Pierce County Pre-Apprenticeships | █ | █ |
| Community Engagement | Comprehensive Center and Affiliate Sites (Assuming avg of 3 visi.. Comprehensive Center and Affiliate Sites Young Adult Development Initiative Pierce County Library System (Computer Training) ResCare 98404 SNAP EcSA (SNAP 98404) Palmer Scholars Goodwill Goodwill Federal YouthBuild Tacoma Urban League | █ | █ |
| Open Doors (Serving OSY) | Northwest Technical High School Graduation Alliance: Bates Graduation Alliance: Acceleration Academy | █ | |
| Re-entry | RP3 Purdy & Mission Creek (TCC & Clover Park Tech) | | █ |

Title 1 Dashboard (PY19 FY20, Quarter 1)

| Segment | Measure | Actual | Target | |
|--|--|--------|------------|------------|
| Adult | Apprenticeships | 0 | 0 | Met Target |
| | Customer Satisfaction (Percent) | 95 | 95 | |
| | Enrollments | 188 | 170 | |
| | Entrepreneurial Training | 1 | 0 | |
| | Exits - Placements | 32 | 57 | |
| | Individual Training Account (ITA) to serve students | 38 | 15 | |
| | On-the-Job Training | 0 | 1 | |
| | Recruit WIOA eligible participants for approved cohort training | 0 | 10 | |
| DW | WEX | 12 | 7 | |
| | Customer Satisfaction (Percent) | 95 | 95 | |
| | Enrollments | 180 | 173 | |
| | Entrepreneurial Training | 2 | 0 | |
| | Exits - Placements | 39 | 57 | |
| | Individual Training Account (ITA) to serve students | 19 | 35 | |
| | On-the-Job Training | 0 | 1 | |
| | Recruit WIOA eligible participants for approved cohort training | 0 | 10 | |
| UI | RR - Place military transition members in employment in partnership with o.. | 21 | 17 | |
| | WEX | 5 | 5 | |
| | Connected to Other System Services | 112 | 75 | |
| | Connected to WS Services | 137 | 125 | |
| Business Solutions | Obtained employment | 17 | 100 | |
| | Outreach Communication Responses | 120 | 375 | |
| | Businesses Served | 53 | 75 | |
| | Convene Sector Partnerships | 0 | 1 | |
| | Customer Satisfaction (Percent) | 95 | 95 | |
| | Employer Services | 155 | 250 | |
| | Identify and assist employers with recruitment needs for open apprentices.. | 0 | 3 | |
| | Job Openings | 339 | 250 | |
| | Job Placements (from job openings with recruitment services) | 29 | 125 | |
| | Job Postings | 32 | 75 | |
| | JobFest Career Fair (attendees) | 0 | 0 | |
| | New On-the-Job Training Sites | 0 | 3 | |
| Young Adult | New Work Experience Sites | 6 | 15 | |
| | Pierce County Career Day (attendees) | 0 | 0 | |
| | Receive Business Referrals | 18 | 10 | |
| | Repeat Customers from Key Sectors | 39 | 75 | |
| | Customer Satisfaction (Percent) | 95 | 95 | |
| | Enrollments (Serving Only Disconnected Young Adults) | 110 | 80 | |
| | Exited to employment and/or education | 39 | 45 | |
| | On-the-Job Training | 1 | 1 | |
| Pre-apprenticeships | 6 | 1 | | |
| Subsidized Employment/Internship (WEX) | 29 | 30 | Met Target | |



**Career Connect Washington:
Regional Network Cohort Planning Call**

September 12th, 2019

**CAREER
CONNECT
WASHINGTON**

Regional Network Goals

Regional Networks:

- Help build or bring to scale a career connected learning system in these three areas: Career Awareness and Exploration, Career Preparation, and Career Launch programs
- Align work and outcomes with the region's economic needs
- Understand and design work based on the diverse needs of students, industry, and K-12 and post-secondary educators in your region
- Communicate career connected learning opportunities to the local K-12 system
 - Work with the Career Connect WA Educational Service District Coordinators to support growth of career connected learning in your region
- Serve as the hub for career connected learning opportunities within the region
- Consolidate regional data and report key learnings to the Career Connect Washington Work Group
- Showcase the real work of students and share upcoming events with legislators

Introductions: Regional Network Grantee Roster

| Region | Network Lead | Contact Information |
|--|--|---|
| Island, San Juan, Skagit, Snohomish and Whatcom counties | Workforce Snohomish | Joy Emory, Director: Development & Communication, Workforce Snohomish joy.emory@workforcesnohomish.org |
| Chelan, Douglas, Grant and Okanogan counties | North Central Educational Service District 171/Apple STEM | Sue Kane, Co-Director, Apple STEM Network suek@ncesd.org |
| Clark, Cowlitz, Klickitat, Pacific, Skamania and Wahkiakum counties | Educational Service District 112/Southwest WA STEM Network | Tim Merlino, Superintendent, ESD 112 tim.merlino@esd112.org |
| Kittitas, Yakima, Grant and Klickitat counties | Educational Service District 105/South Central WA STEM Network | Mark Cheney, Director, South Central STEM Network mark.Cheney@esd105.org |
| Thurston, Mason, Lewis, Grays Harbor and Pacific counties | Capital Region Educational Service District 113 | Lorie Thompson, Director, Capital Region STEAM Network lthompson@esd113.org |
| Walla Walla, Benton, Franklin, Columbia, Garfield and Asotin counties | Washington State STEM Education Foundation/Mid-Columbia STEM Network | Debra Bowen, Executive Director, Mid-Columbia STEM Network deb@STEMlearning.org |
| King and Pierce counties | Washington Alliance for Better Schools | Emily Yim, Executive Director, WABS emilyy@wabsalliance.org |
| Kitsap, Jefferson and Clallam counties | South Kitsap School District # 402/West Sound STEM Network | Kareen Borders, Director, West Sound STEM Network borders@skschools.org |
| Adams, Ferry, Lincoln, Pend Oreille, Spokane, Stevens and Whitman counties | Greater Spokane Incorporated | Meg Lindsay, Director, Spokane STEM Network mlindsay@greaterspokane.org |

Bold Goal Update

BOLD GOAL: By 2025 the workforce system will reduce the number of disconnected young adults, 16 to 24, by half - from 15,300 to 7,650.

BOLD GOAL: By 2025 the workforce system will reduce the number of residents between the ages of 25 to 64 without a High School Diploma or a GED, by half - from 38,475 to 19,237.

Objective 1

Increase business engagement with the workforce system.

Restructured of WDC Business Services Committee to focus on peer to peer business engagement

Completed System Business Solutions Plan for serving business needs. This is also part of integrated system work

Fully implemented customer satisfaction feedback system wide

Newly formed integrated system partner Business Solutions Team
Engaged Organizations:
Clover Park Tech College, Department of Social Health Services, Department of Vocational Rehabilitation, Employment Security Dept., Goodwill, Invista, Pierce College, ResCare, Tacoma Community College, Tacoma Community House

Objective 2

Create an integrated system that align with goals

Implemented common referral process powered by United Way 211

Created a Community Engagement Taskforce with over 30 system partners from various organizations

Fully implemented customer satisfaction feedback system

Aligned grant with Bold Goals expectations– WFC applications/proposals community & system partners receive 1.7MM for poverty Reduction - EcSA

Common system data collection: common definitions developed and trying to pilot data collection and reporting.

Objective 3

Expand and improve the talent pipeline of disconnected young adults and adults to quality jobs.

New WDC committee -Talent Pipeline Committee to focus on pipeline development

Introduction of Power Up Pierce - interest assessment, explore career opportunities and access services and training

Introduced Live. Work. Pierce. – Pierce County Job Portal

Youth Advisory Committee. Young Adult Power Up Pierce Ambassadors

Increased awareness of services via Facebook and Instagram - 228K Facebook followers 2,334 on Instagram

Objective 4

Support individuals to gain employment through a system of wrap around services that is responsive to their diverse experience and needs.

Partner with Adult Basic Education (ABE) providers at community based organizations, community & technical colleges to support a navigator for outreach and engagement in high school equivalency programs

Focus groups with HS21 and GED participants to gain insight into what resources are needed

Promoting United Way's 211 for wrap around service

Employee Membership Assistance Program (EMAP) – Adds additional wrap around services such as legal and confidential mental health assistance

UI Initiative – working with ESD to add wrap around services for UI claimants

Introduced Life Coaches to assist customers with life issues and executive function