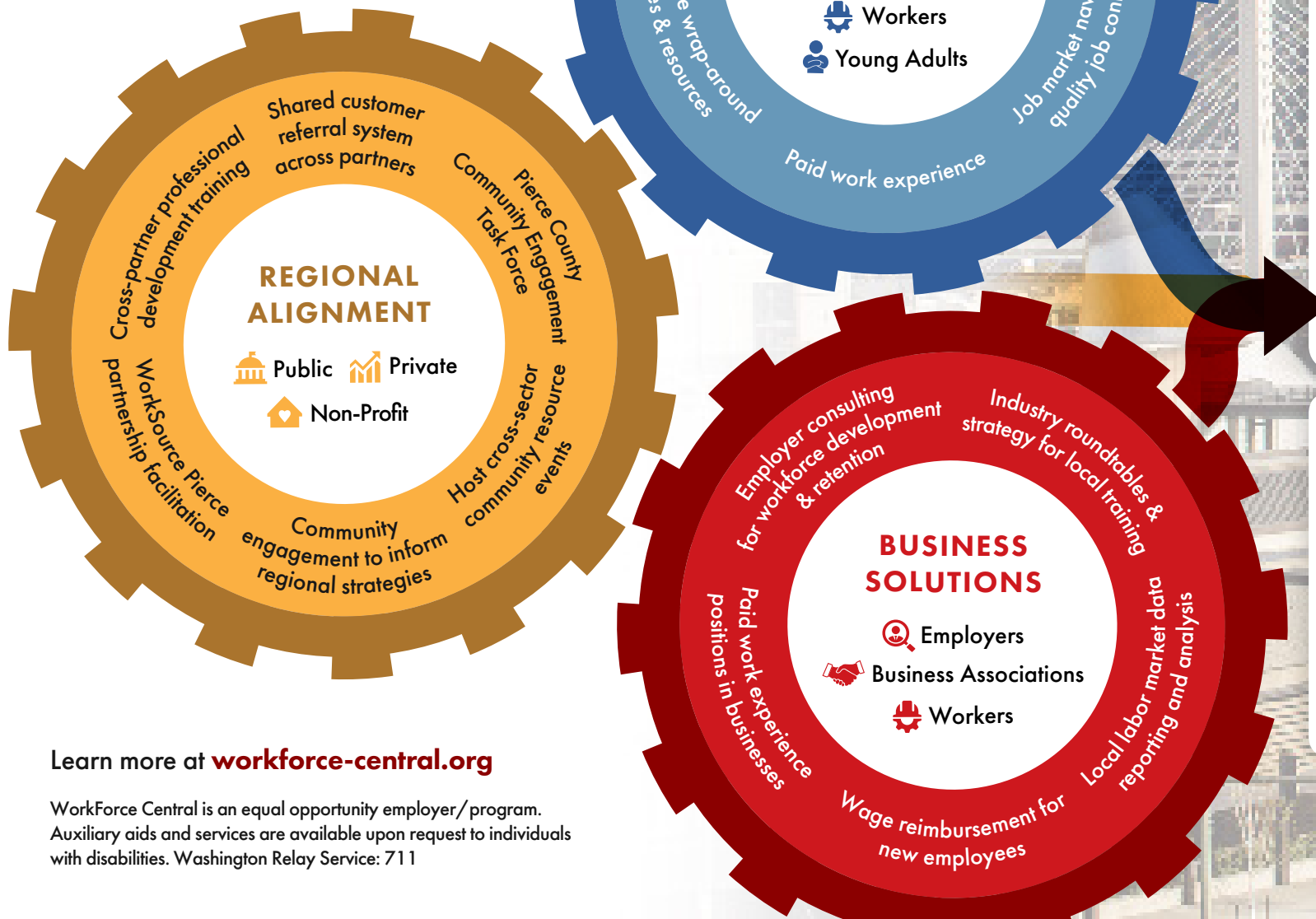




Theory of Change

Bridging the gap between job seekers, employers, and community organizations.



Impact

- Individuals complete paid work experience
- Individuals complete workforce education and training
- Businesses are connected to skilled workforce
- Individuals are connected to and retained in quality jobs
- Agencies align to increase accessibility to workforce services

Regional Goals

- Reduce the gap between labor demand and available skills
- Increase the percent of youth and adults connected to education, training, and quality jobs

Learn more at workforce-central.org

WorkForce Central is an equal opportunity employer/program. Auxiliary aids and services are available upon request to individuals with disabilities. Washington Relay Service: 711